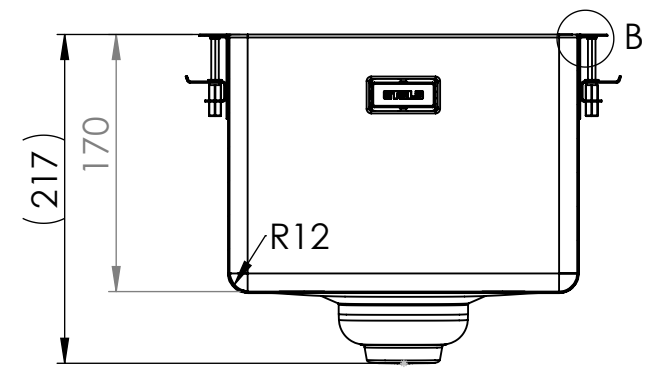
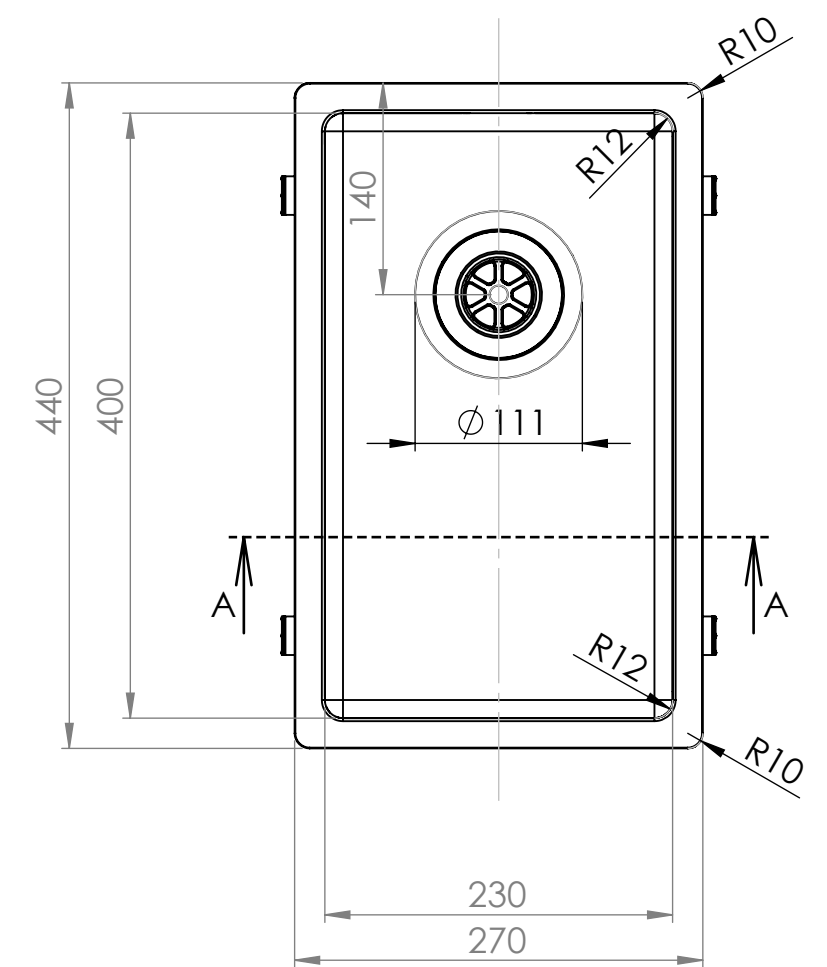
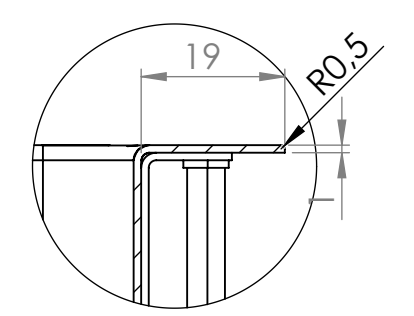


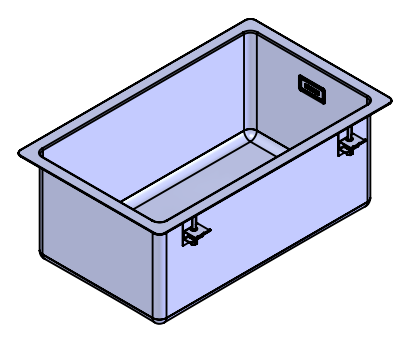
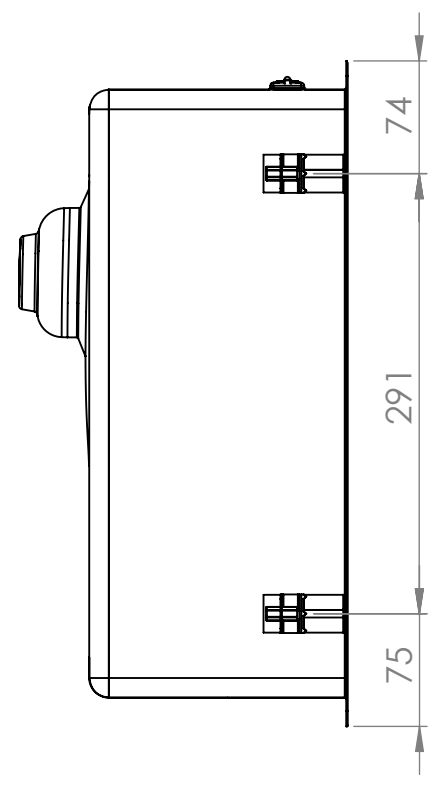
MAIN DIMENSIONS



SECTION A-A

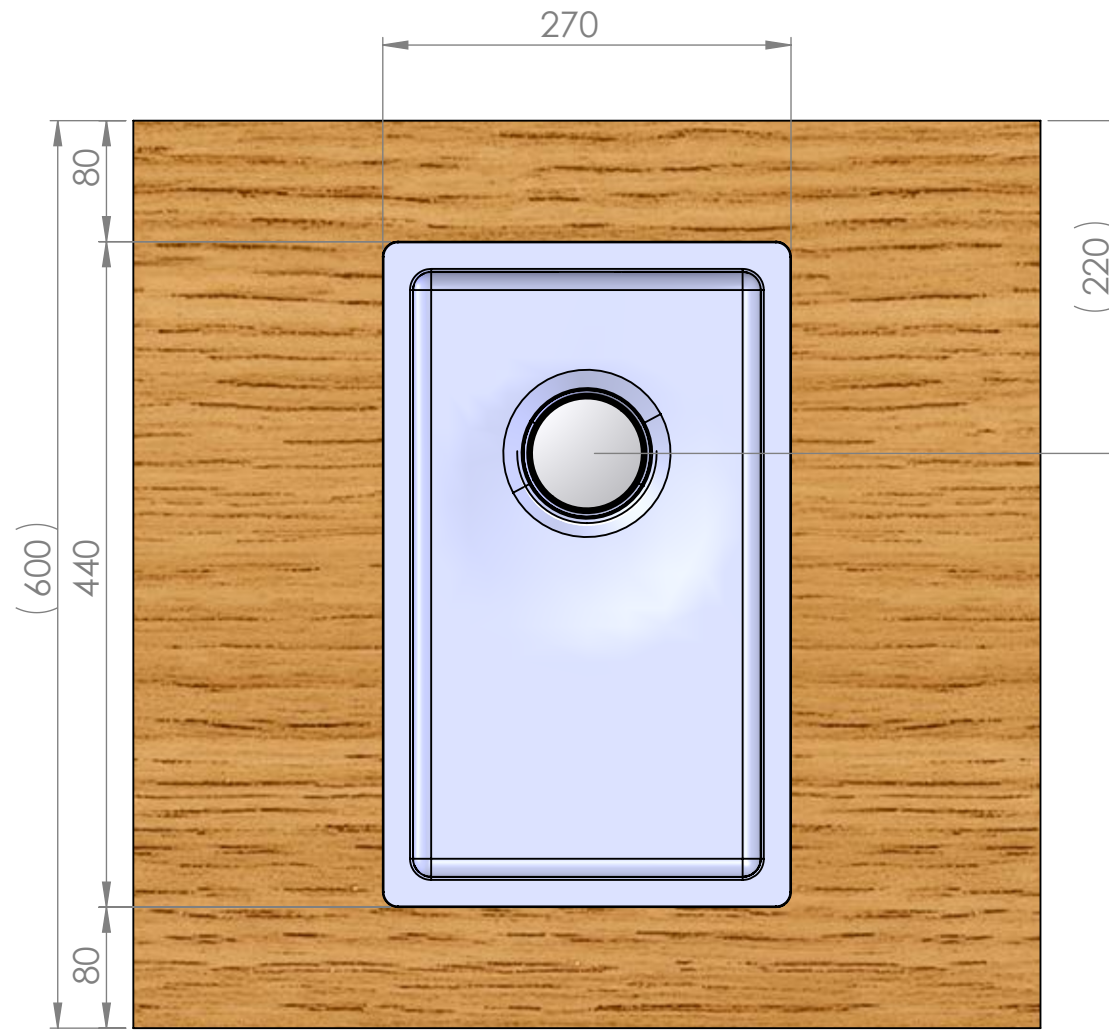


DETAIL B
SCALE 1 : 1



1	2	3	4	5	6	7	8
				Change description		Date	Designed by
				Mass	kg	General tolerance	Designed by
				Size	Scale	Item	Date
				A3	1:5		VS
				 Member of ALVEUS		Description	Drawing number
						ULTRA-23	19808
				Technical Data Sheet		Sheet/sheets	1/6
						Rev	A
1	2	3	4	5	6	7	8

WORKTOP ASSEMBLY

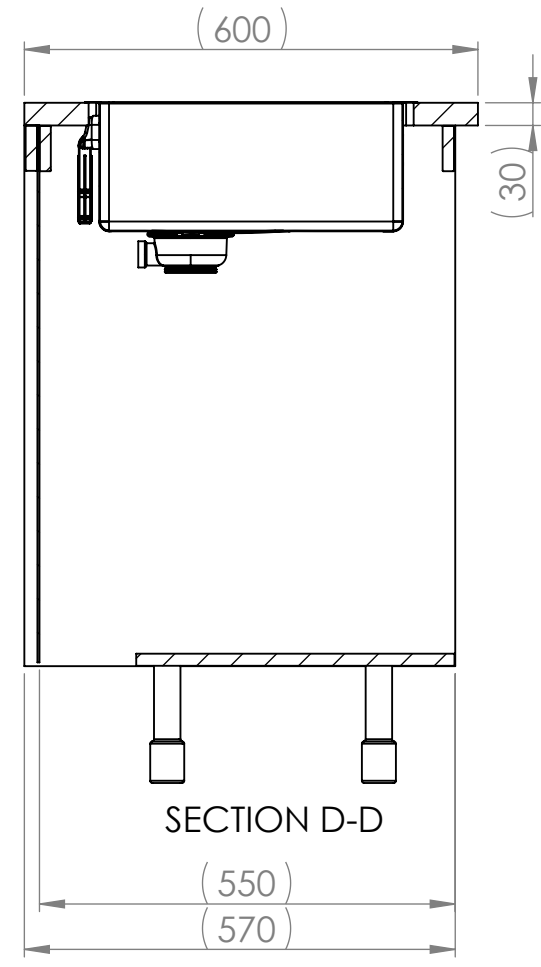
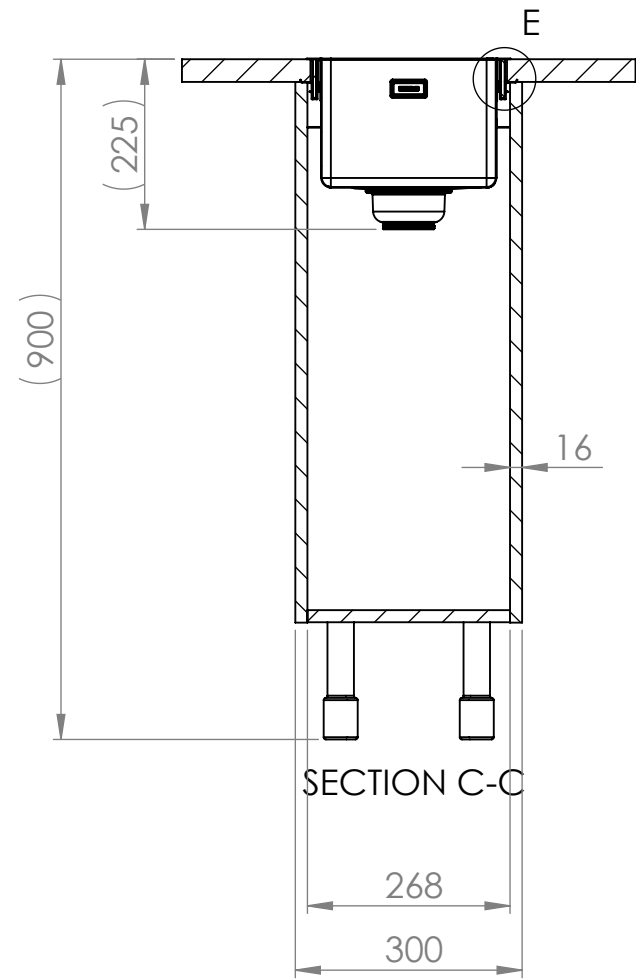


Change description	Date	Designed by
--------------------	------	-------------

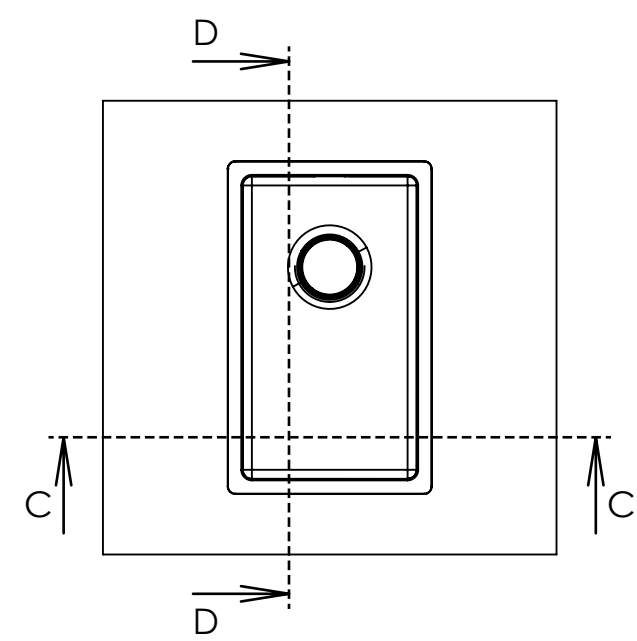
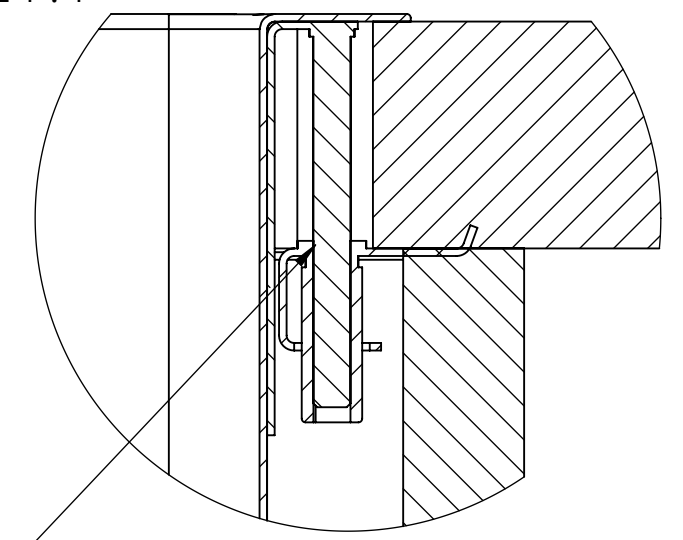
	Mass	kg	General tolerance	Designed by	Date
	Size	Scale	Item	VS	29.05.2024
 Member of ALVEUS	A3	1:5	Description	Approved by	Date
	ULTRA-23		Technical Data Sheet	VS	02.09.2024
	19808		Sheet/sheets	2/6	Rev

Change description	Date	Designed by
--------------------	------	-------------

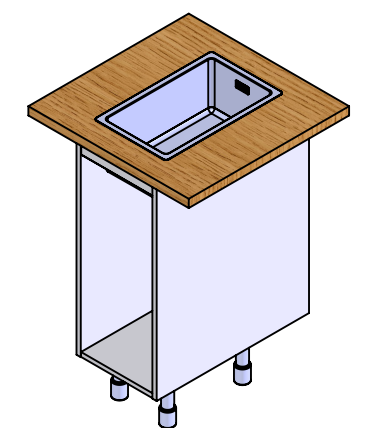
SPACE REQUIREMENTS




DETAIL E
SCALE 1 : 1

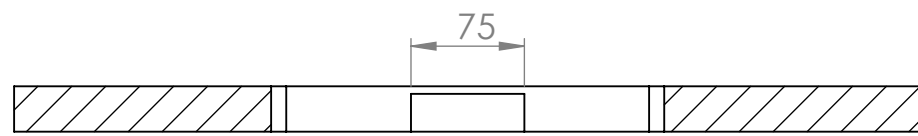
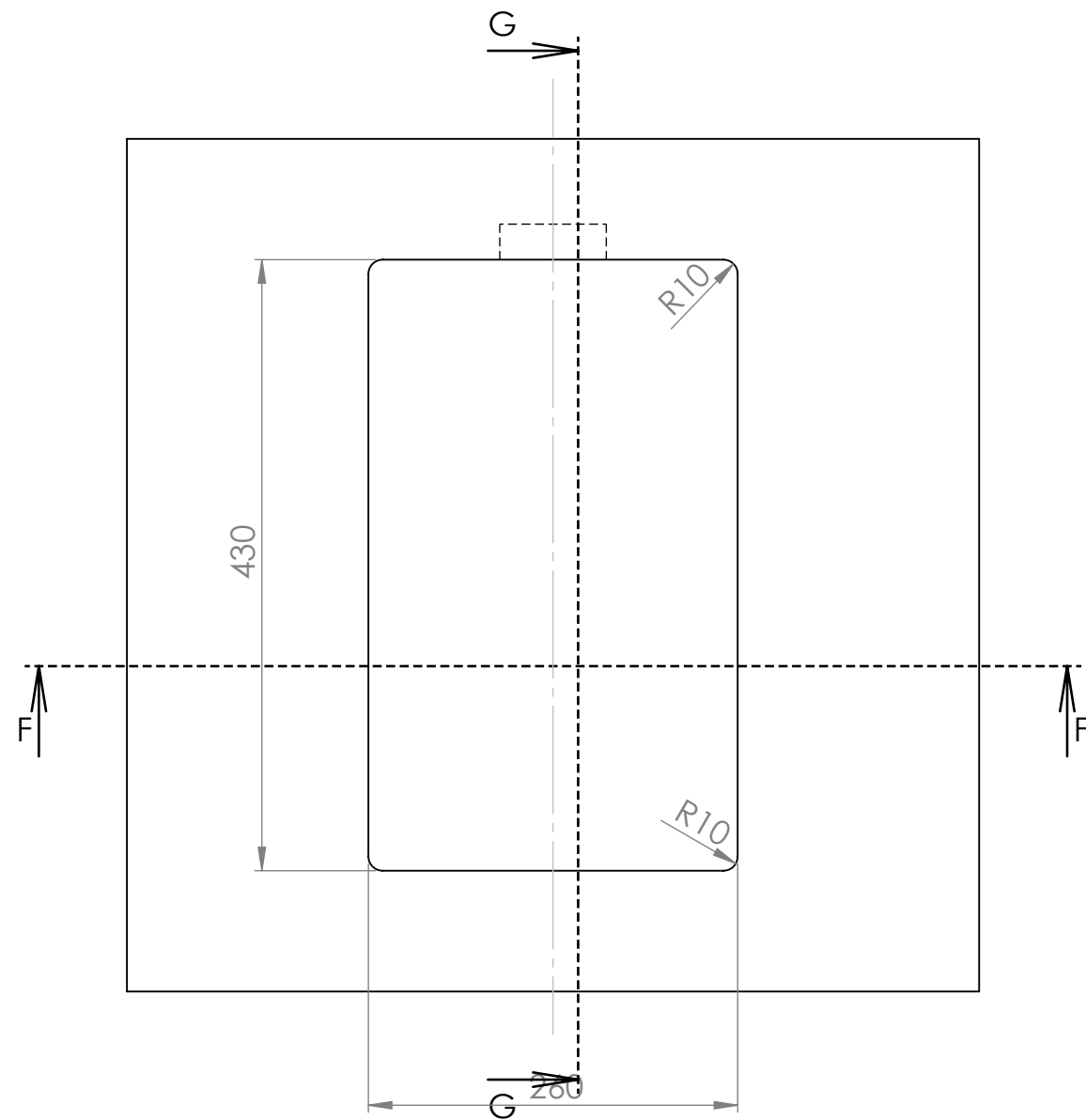


Huom!
Tarvittaessa kaapin väliseinää ja etu/takalistaa lovettava kiinnikkeitä varten ja pesuallas on kiinnitettävä ennen työtason asennusta.
Obs!
Vid behov måste en inskärning för hofästena göras i skåpets mellanvägg och förbindningslist och diskbänken måste fästas innan du monterar bänkskivan.
Notice!
The partition walls and front/back list of the cupboard must be notched for the sink mountings when needed and the sink must be fastened before installing the worktop.

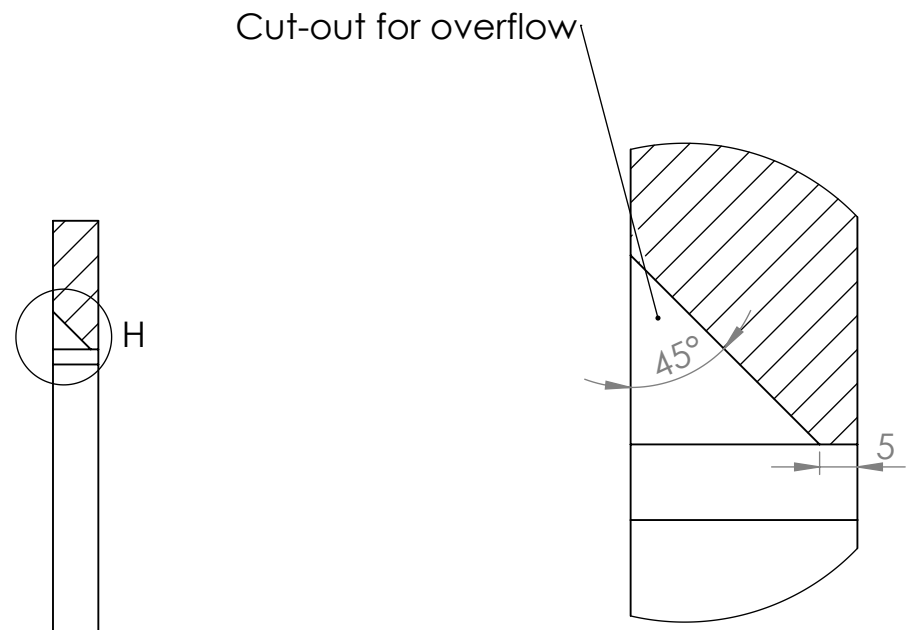


 Member of ALVEUS	Mass kg	General tolerance	Designed by VS	Date 29.05.2024
	Size A3	Scale 1:10	Item	Approved by VS
Description ULTRA-23 Technical Data Sheet			Drawing number 19808	Sheet/sheets 3/6
				Rev A

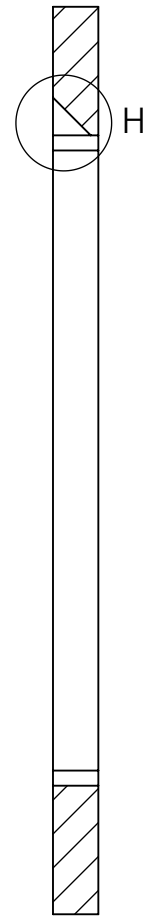
1	2	3	4	5	6	7	8	
				Change description			Date	Designed by



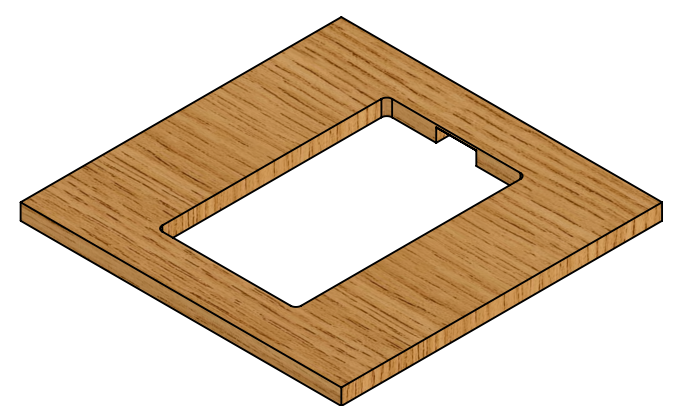
SECTION F-F



DETAIL H
SCALE 1 : 1



SECTION G-G



	Mass	kg	General tolerance	Designed by	Date
	Size	Scale	Item	VS	29.05.2024
	A3	1:5	ULTRA-23 Technical Data Sheet	Approved by	Date
				VS	02.09.2024
				Drawing number	Sheet/sheets
				19808	4/6
				Rev	A

